
 3 Bedrooms

 2½ Bathrooms

 Double Garage

# THE OXFORD II ZLL

2067 SQ.FT.

181 MITCHELL ROAD NW



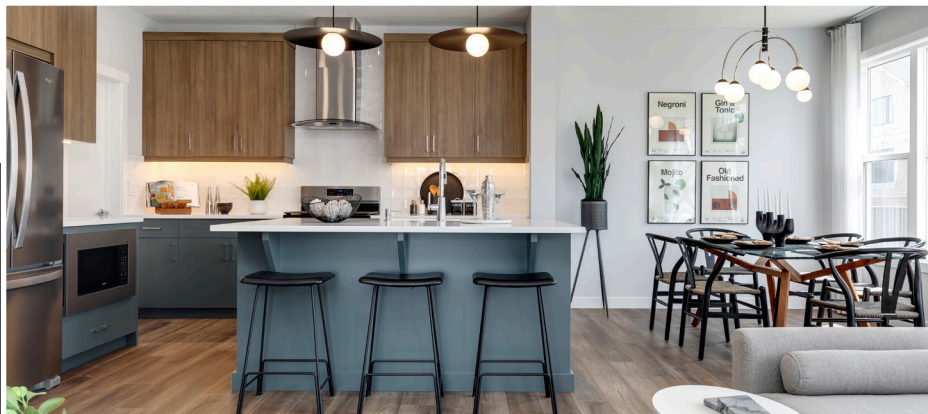
GLACIER RIDGE

### COME VISIT OUR SHOWHOMES

177 & 181 Mitchell Road NW, Calgary, AB  
Call Sam Bibanco today at 825.540.2946  
or email at sambibanco@tricohomes.com

### SHOWHOME HOURS:

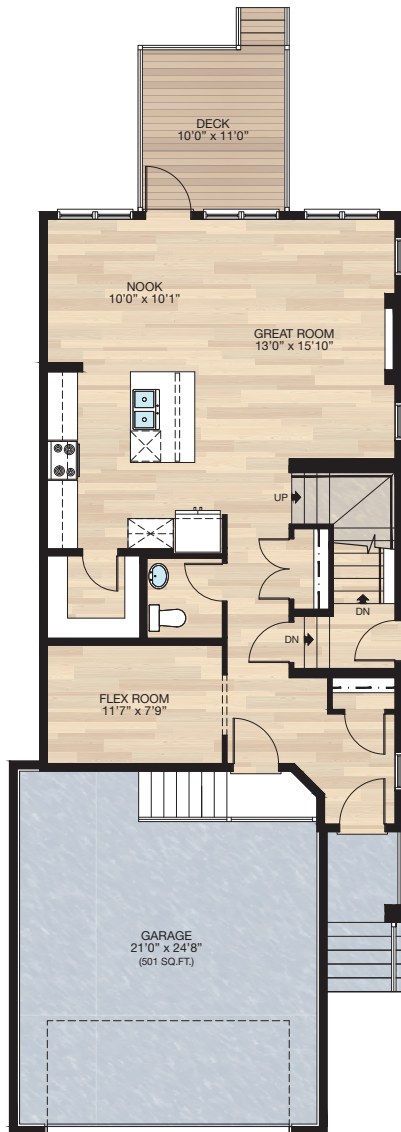
Mon - Thurs: 2pm - 8pm  
Fri: Closed  
Sat - Sun: 12pm - 5pm



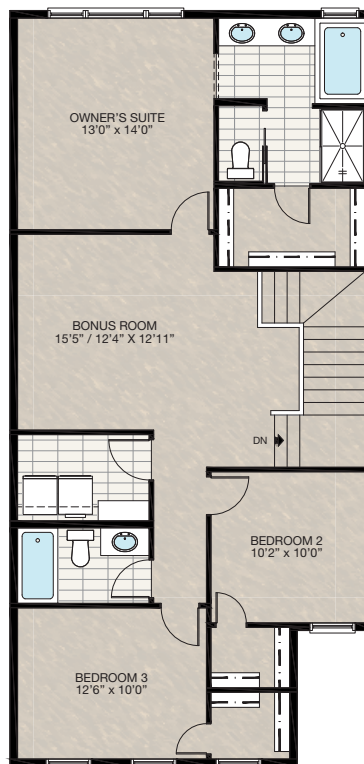
Trico Homes™  
The Heart of Homebuilding®

# SHOWHOME PLAN

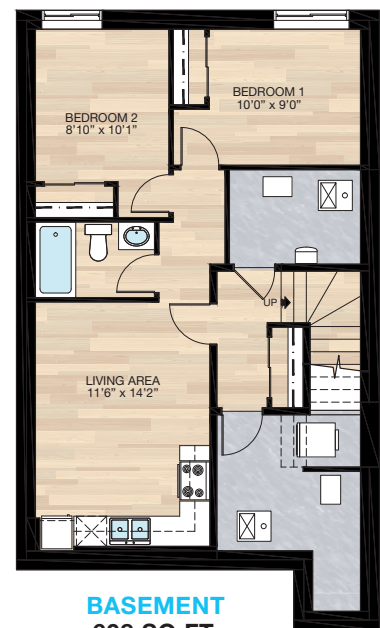
THE  
OXFORD II  
2067 SQ.FT.



**MAIN**  
912 SQ.FT.



**UPPER**  
1155 SQ.FT.



**BASEMENT**  
608 SQ.FT.



Platinum member  
2004 - 2024



Renderings are artist's conceptions only and may vary by community and lot selection. Prices, floorplans, specifications and dimensions are approximate and are subject to change without notice. E.&O.E. © All rights reserved, including the right if reproduction in the whole or in part without the permission of Trico Homes.

Plan updated as of June 1, 2026.



HARDWOOD	DECK	CARPET	CONCRETE	TILE	LVP
----------	------	--------	----------	------	-----

tricohomes.com