

THE RAEYA ZLL

1,802 SQ.FT.

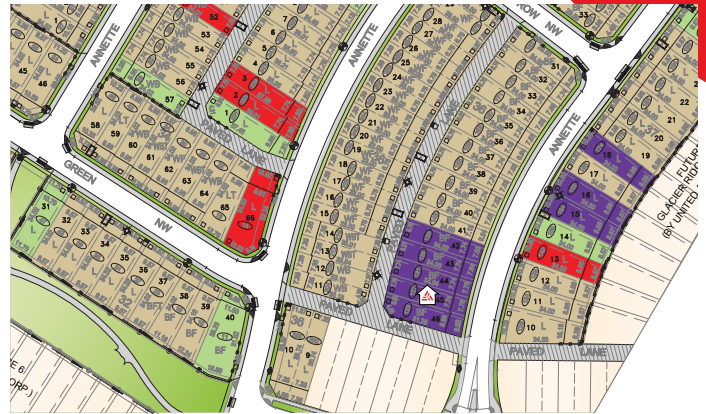


127 Annette Landing NW

3 Bedrooms ▲ 3 Bathrooms

OPTIONS INCLUDED IN THIS HOME:

- East facing homesite near parks & pathways
- Main floor flex room & full bathroom with standing shower
- 9' Main floor ceilings
- L-shaped kitchen
- 42" Upper cabinets in kitchen
- Upper floor central bonus room
- Full laundry room
- His & her's sinks in owner's ensuite
- Rear deck with stairs to grade
- 9' Foundation



Plus
**RECEIVE YOUR OWN
 TRICO RED CARD**



& ENJOY INCREDIBLE ONGOING SAVINGS & REWARDS FROM OUR PARTNERS & RETAILERS

VISIT OUR SHOWHOMES

170 & 174 Mitchell Road NW
Calgary, AB



THE RAEYA



THE SANDALWOOD

Showhome Hours:

MON - THURS: 2PM - 8PM
FRI: Closed
SAT - SUN: 12PM - 5PM

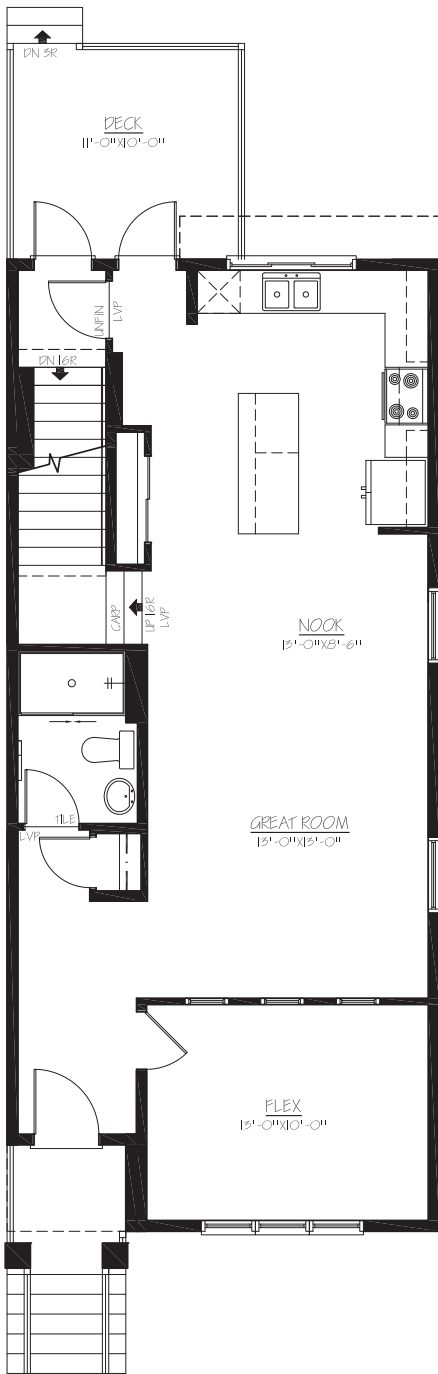
Contact **Sam Bibanco**

CALL: 852.540.2946 | **EMAIL:** sambibanco@tricohomes.com

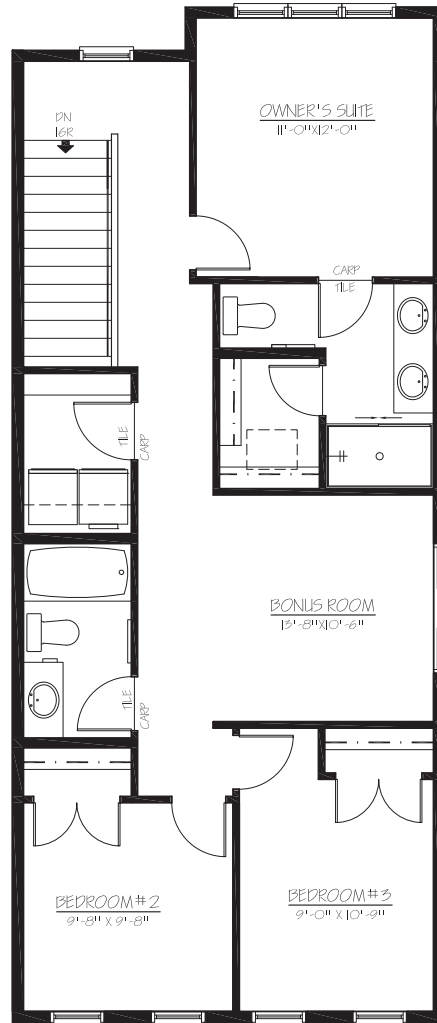


Trico Homes™
tricohomes.com

MAIN
878 SQ.FT.



UPPER
924 SQ.FT.



tricohomes.com

Renderings are artist's conceptions only and may vary by community and lot selection. Prices, floorplans, specifications and dimensions are approximate and are subject to change without notice, E.&OE. © All rights reserved, including the right if reproduction in the whole or in part without the permission of Trico Homes. TC-30744 Plan updated May 8, 2026.