

THE LAWSON ZLL

2,586 SQ.FT.



162 Annette Landing NW

5 Bedrooms ▲ 4 Bathrooms ▲ Double Garage



OPTIONS INCLUDED IN THIS HOME:

- West facing homesite
- Main floor bedroom & full bathroom with standing shower
- Main floor flex room
- Spice kitchen
- 9' Main floor ceilings
- Quartz countertops in kitchen
- Dual ensuites layout
- 4 Bedrooms & central bonus room on upper floor
- Full laundry room on upper floor
- 5 Piece owner's ensuite with his & her's sinks
- Separate side entrance
- 9' Foundation



Plus
RECEIVE YOUR OWN
TRICO RED CARD



& ENJOY INCREDIBLE ONGOING SAVINGS & REWARDS FROM OUR PARTNERS & RETAILERS

VISIT OUR SHOWHOMES

177 & 181 Mitchell Road NW
Calgary, AB



THE CONCORD



THE OXFORD II

Showhome Hours:

MON - THURS: 2PM - 8PM
FRI: Closed
SAT - SUN: 12PM - 5PM

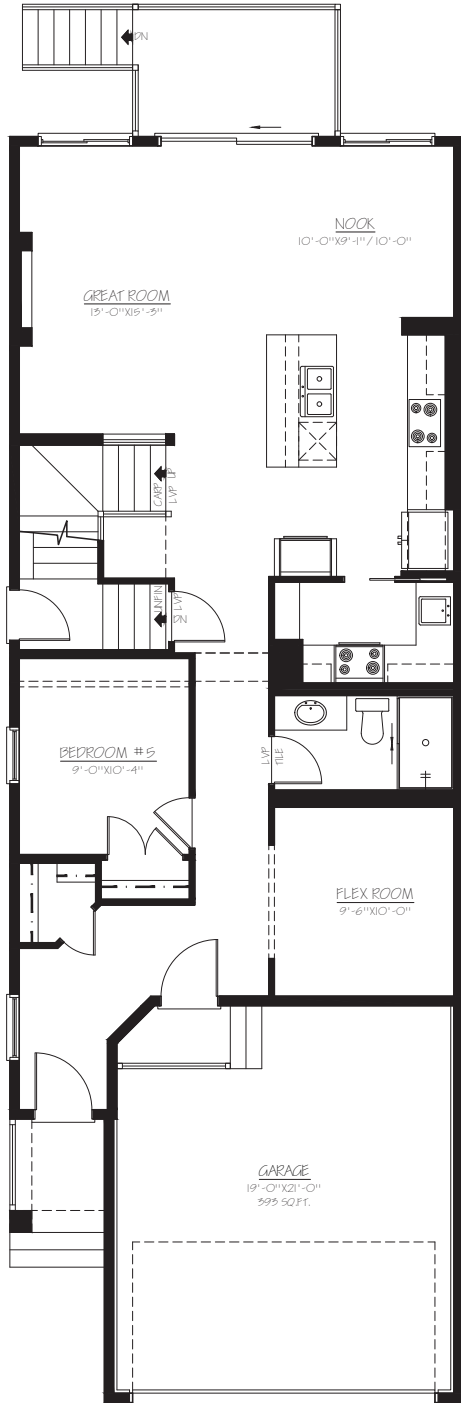
Contact **Sam Bibanco**

CALL: 825.540.2954 | EMAIL: sambibanco@tricohomes.com

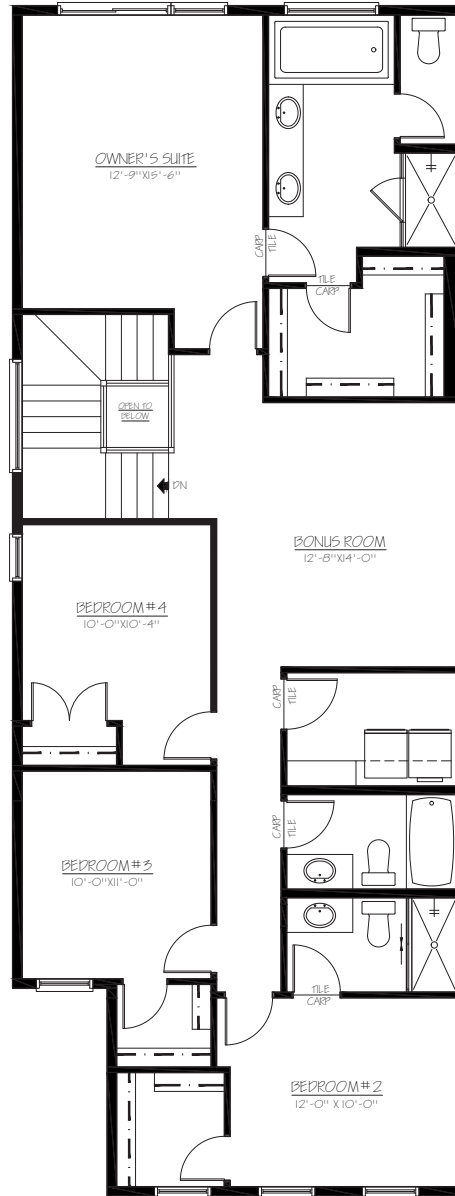


Trico Homes™
tricohomes.com

MAIN
1140 SQ.FT.



UPPER
1446 SQ.FT.



trichohomes.com

Renderings are artist's conceptions only and may vary by community and lot selection. Prices, floorplans, specifications and dimensions are approximate and are subject to change without notice, E.&OE. © All rights reserved, including the right if reproduction in the whole or in part without the permission of Trico Homes. Plan updated May 26, 2026.