

THE ENCORE ZLL

2,331 SQ.FT.

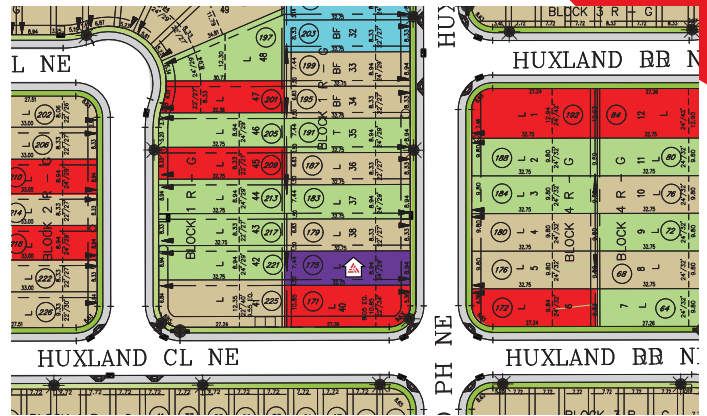
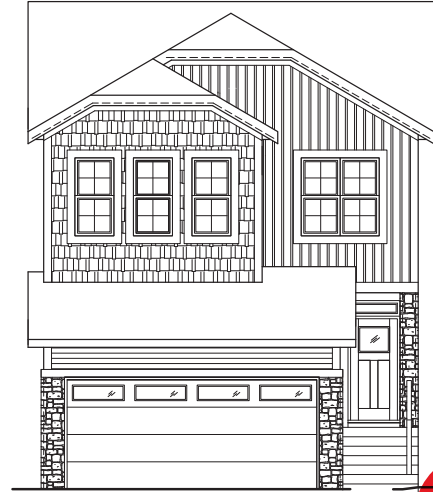
huxley

175 Huxland Path NE

4 Bedrooms ▲ 3 Bathrooms ▲ Double Garage

OPTIONS INCLUDED IN THIS HOME:

- East facing homesite with west facing backyard
- Main floor bedroom & full bathroom
- Spice kitchen with gas range
- 42" Full height upper cabinetry & crown moulding in kitchen
- Built-in appliances in kitchen
- 9' knock-down ceilings on main floor
- Pot lights added to great room
- Hardwood, tile & carpet throughout
- 3 Bedrooms & central bonus room on upper floor
- 5 Piece owner's ensuite with glass & tile shower & his & her's sinks
- Full laundry room
- 9' Foundation



Plus

RECEIVE YOUR OWN
TRICO RED CARD



& ENJOY INCREDIBLE ONGOING SAVINGS & REWARDS FROM OUR PARTNERS & RETAILERS

VISIT OUR SHOWHOMES

203 & 207 Huxland Path NE
Calgary, AB



THE OAKRIDGE



THE KINGSLEY

Showhome Hours:

MON - THURS: 2PM - 8PM
FRI: Closed
SAT - SUN: 12PM - 5PM

Contact **Mehdi Murtaza**

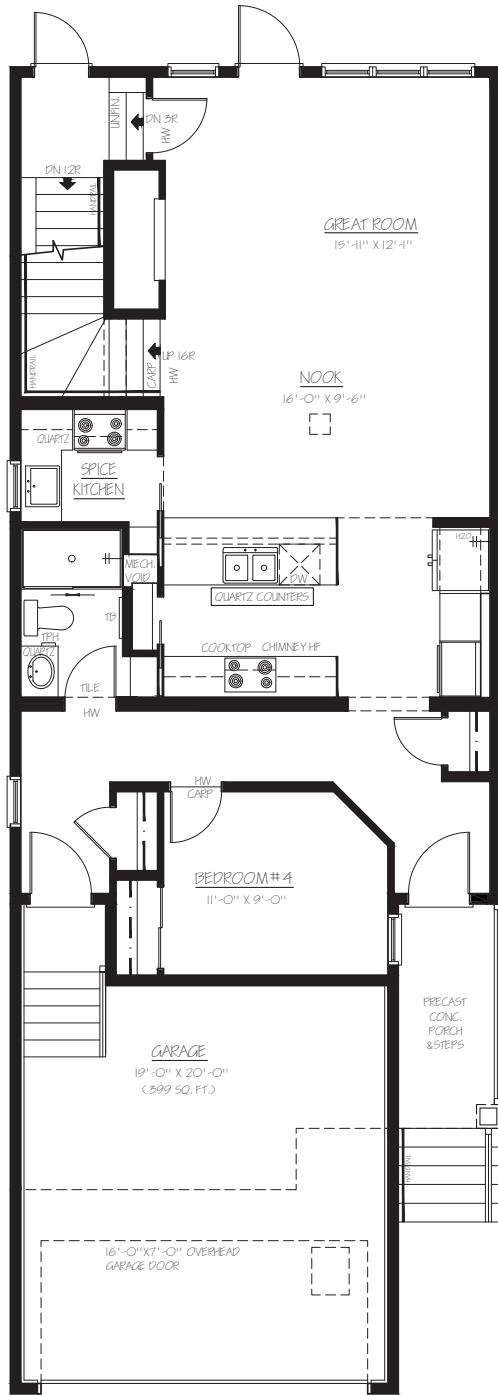
CALL: 403.452.1350 | EMAIL: mehdimurtaza@tricohomes.com



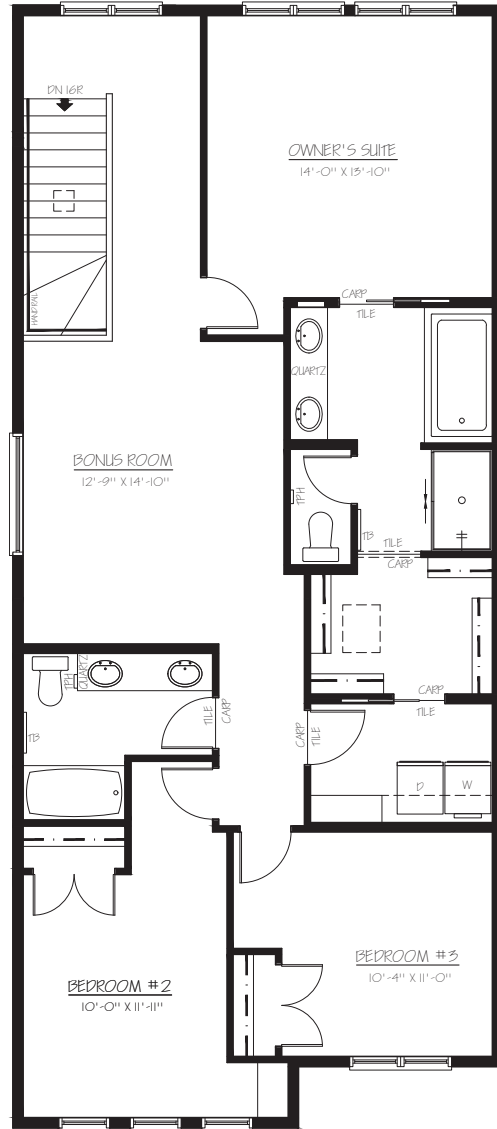
Trico Homes™

tricohomes.com

MAIN
1041 SQ.FT.



UPPER
1290 SQ.FT.



Renderings are artist's conceptions only and may vary by community and lot selection. Prices, floorplans, specifications and dimensions are approximate and are subject to change without notice. E.&OE. © All rights reserved, including the right if reproduction in the whole or in part without the permission of Trico Homes. Plan updated April 28, 2026.



tricohomes.com