

THE CARDINAL

1,420 SQ.FT.

Foxtail
STREET TOWNS
BY TRICO

2045 Vantage Way SW

3 Bedrooms ▲ 2½ Bathrooms ▲ Double Garage

OPTIONS INCLUDED IN THIS HOME:

- Near numerous shops, restaurants & amenities
- Prairie Modern Inspirations standard color package
- 9' Main floor with knock down ceiling
- L-shaped kitchen with full height cabinets, upgraded semi-built-in stainless steel appliances, black hardware accents & island eating bar
- Quartz countertops throughout
- Kitchen pantry, mudroom with closet
- 3 Bedroom upper floor layout, with 4 piece owner's ensuite & laundry room
- Includes upgrades on flooring, metal spindle railing throughout, & upgraded lighting package
- Zebra blinds
- 9' Foundation with separate basement side entry, 2 basement windows, full bath rough-ins & tankless water heater
- Patio & full landscaping & fence package included

VISIT OUR SHOWHOMES

2061 Vantage Way SW
Airdrie, AB



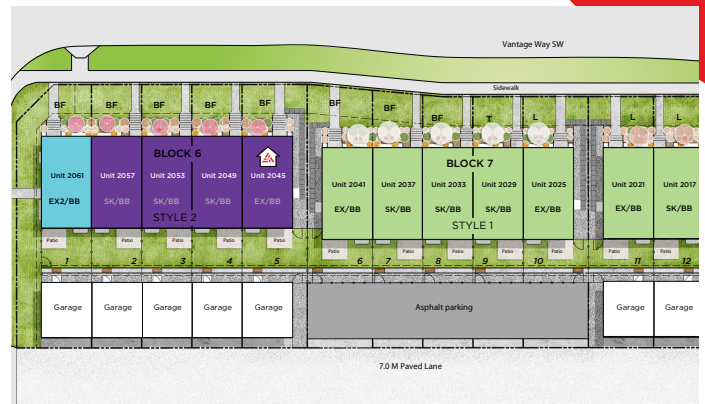
THE SPARROW & THE CARDINAL

Contact Kyle Amos

CALL: 587.580.6137 | EMAIL: kyleamos@tricohomes.com

SUMMER POSSESSION

NO CONDO FEES!



Plus
RECEIVE YOUR OWN
TRICO RED CARD



& ENJOY INCREDIBLE ONGOING SAVINGS & REWARDS FROM OUR PARTNERS & RETAILERS

Showhome Hours:

MON - THURS: 2PM - 8PM

FRI: Closed

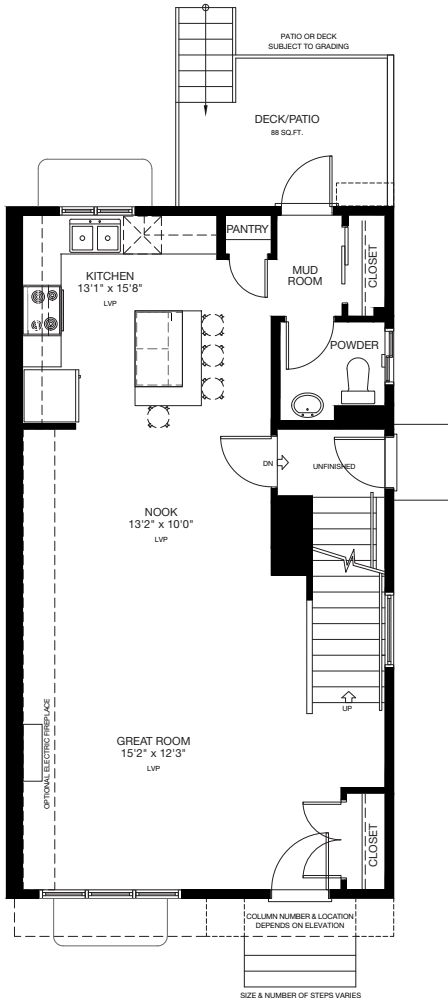
SAT - SUN: 12PM - 5PM



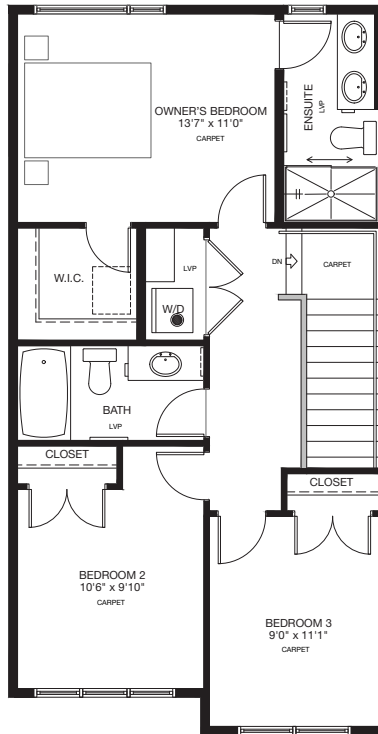
Trico Homes™

tricohomes.com

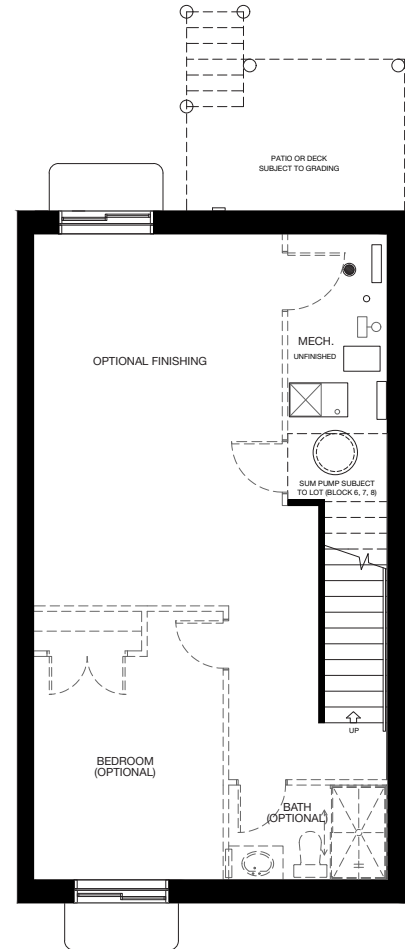
MAIN
730 SQ.FT.



UPPER
690 SQ.FT.



BASEMENT
641 SQ.FT.



trichomes.com

Renderings are artist's conceptions only and may vary by community and lot selection. Prices, floorplans, specifications and dimensions are approximate and are subject to change without notice. E.&OE. © All rights reserved, including the right if reproduction in the whole or in part without the permission of Trico Homes. Plan updated April 23, 2026.