

THE MEADOWLARK

2,071 SQ.FT.



2061 Vantage Way SW

5 Bedrooms ▲ 3½ Bathrooms ▲ Double Garage

OPTIONS INCLUDED IN THIS HOME:

- Near numerous shops, restaurants & amenities
- Scandinavian Minimalistic upgraded color package
- 9' Main floor with knock down ceiling
- L-shaped kitchen with full height cabinets, upgraded semi-built-in stainless steel appliances, & island eating bar
- Electric fireplace in the great room
- Quartz countertops throughout
- Kitchen pantry & mudroom with lockers & bench
- 3 Bedroom upper floor layout, with 4 piece owner's ensuite & laundry room
- Includes upgraded flooring, staircase railing, & lighting package with under-cabinet lighting
- Zebra blinds, A/C & tankless water heater
- 2 Bedroom basement suite with separate side entry
- Patio & full landscaping & fence package included



SHOWHOME
LEASEBACK



Plus
RECEIVE YOUR OWN
TRICO RED CARD



& ENJOY INCREDIBLE ONGOING SAVINGS & REWARDS FROM OUR PARTNERS & RETAILERS

**VISIT OUR
SHOWHOMES**

2061 Vantage Way SW
Airdrie, AB



THE SPARROW & THE CARDINAL

Contact **Kyle Amos**

CALL: 587.580.6137 | EMAIL: kyleamos@tricohomes.com

Showhome Hours:

MON - THURS: 2PM - 8PM

FRI: Closed

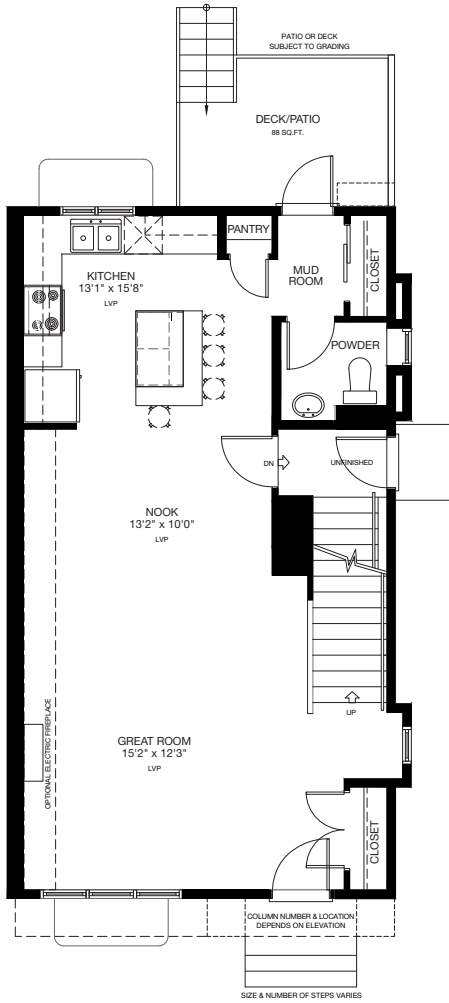
SAT - SUN: 12PM - 5PM



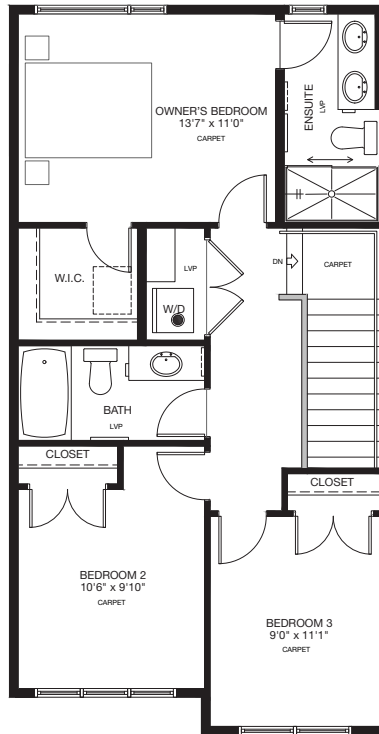
Trico Homes™

tricohomes.com

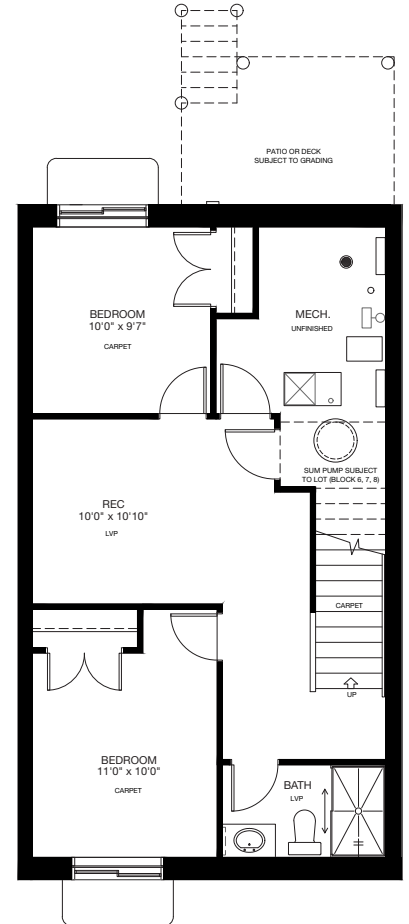
MAIN
740 SQ.FT.



UPPER
690 SQ.FT.



BASEMENT
641 SQ.FT.



tricohomes.com

Renderings are artist's conceptions only and may vary by community and lot selection. Prices, floorplans, specifications and dimensions are approximate and are subject to change without notice, E.&OE. © All rights reserved, including the right if reproduction in the whole or in part without the permission of Trico Homes. Plan updated April 23, 2026.