

THE REGENT

1,344 SQ.FT.

Chelsea Court
TOWNHOMES

43, 285 Chelsea Court

2 Bedrooms ▲ 2½ Bathrooms ▲ Tandem Garage

OPTIONS INCLUDED IN THIS HOME:

- Homesite located minutes away from local amenities, including eco-park, green spaces, schools, plaza & East Hills Shopping Centre
- Hardie Board siding exterior
- Entry level flex room with bathroom
- 9' Knock-down ceilings on entry & main level
- Open concept main floor
- Upgraded semi-built-in kitchen with stainless steel appliances & quartz countertops
- Dual bedrooms with separate ensuites & walk-in closets
- 4-Piece owner's ensuite
- Zebra blinds
- 11' Wide deck with gas line on main level
- EV charging rough-ins in garage
- A/C rough-ins



Plus
**RECEIVE YOUR OWN
TRICO RED CARD**



& ENJOY INCREDIBLE ONGOING SAVINGS & REWARDS FROM OUR PARTNERS & RETAILERS

**VISIT OUR
SHOWHOMES**

84 - 285 Chelsea Court
Chestermere, AB



THE REGENT

Contact Marvin Ray Uy today

CALL: 852.605.0130 | **EMAIL:** marvinrayuy@tricohomes.com

Showhome Hours:

MON - THURS: 2PM - 8PM

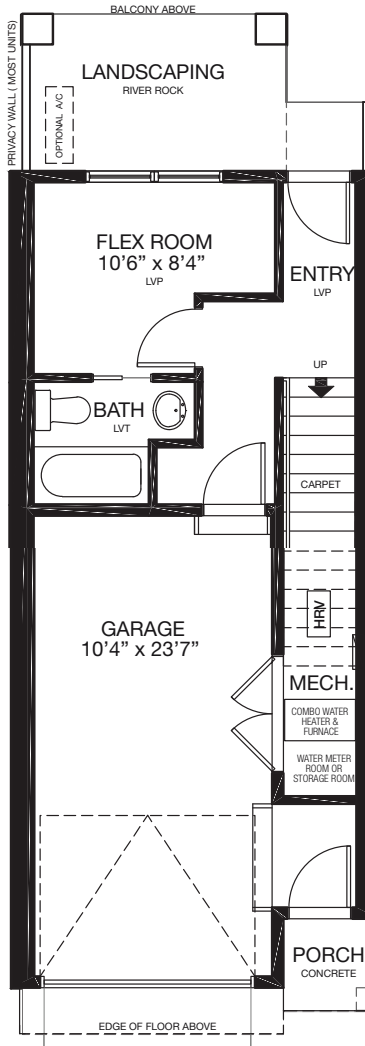
FRI: Closed

SAT - SUN: 12PM - 5PM

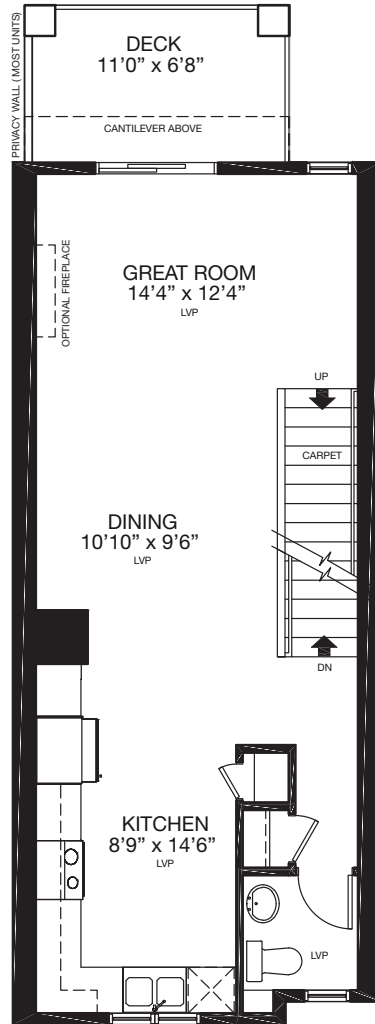


Trico Homes™
tricohomes.com

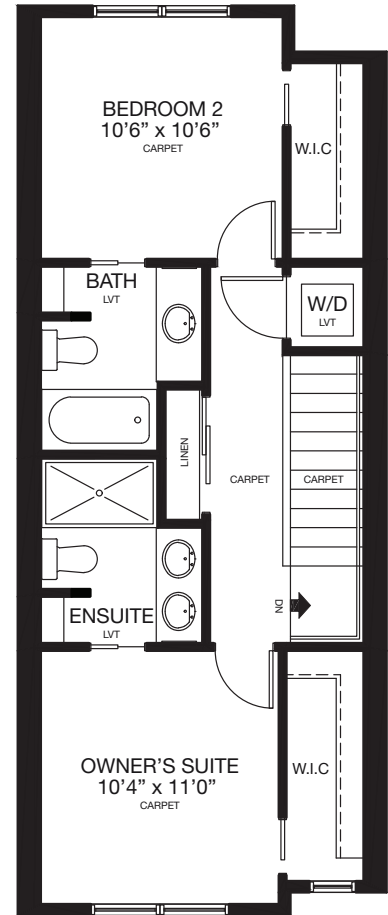
ENTRY
203 SQ.FT.



MAIN
559 SQ.FT.



UPPER
582 SQ.FT.



Renderings are artist's conceptions only and may vary by community and lot selection. Prices, floorplans, specifications and dimensions are approximate and are subject to change without notice. E.&O.E. © All rights reserved, including the right if reproduction in the whole or in part without the permission of Trico Homes. TC-30744 Plan updated June 29, 2026.



tricohomes.com