

THE MONARCH

1,374 SQ.FT.

Chelsea Court
TOWNHOMES

45, 285 Chelsea Court

3 Bedrooms ▲ 3½ Bathrooms ▲ Single Garage



OPTIONS INCLUDED IN THIS HOME:

- Homesite located minutes away from local amenities, including eco-park, green spaces, schools, plaza & East Hills Shopping Centre
- Hardie Board siding exterior
- Flex room with a full bathroom on entry level
- Upgraded semi-built-in kitchen with stainless steel appliances
- 9' Knock-down ceilings on entry & main level
- Open concept main floor
- Quartz countertops
- Zebra blinds
- 11' Wide deck with gas line on main level
- 4-Piece owner's ensuite
- A/C rough-ins
- EV charging ready rough-ins in garage



Plus
**RECEIVE YOUR OWN
TRICO RED CARD**



& ENJOY INCREDIBLE ONGOING SAVINGS & REWARDS FROM OUR PARTNERS & RETAILERS

**VISIT OUR
SHOWHOMES**

84 - 285 Chelsea Court
Chestermere, AB



THE REGENT

Contact Marvin Ray Uy today

CALL: 852.605.0130 | **EMAIL:** marvinrayuy@tricohomes.com

Showhome Hours:

MON - THURS: 2PM - 8PM

FRI: Closed

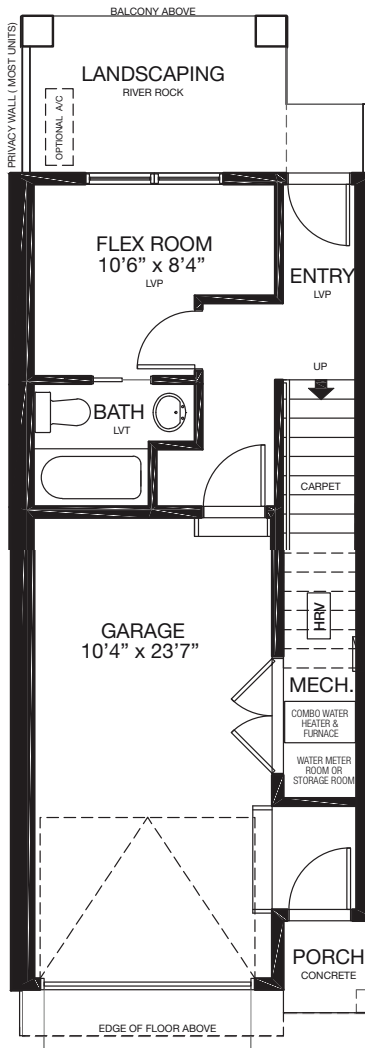
SAT - SUN: 12PM - 5PM



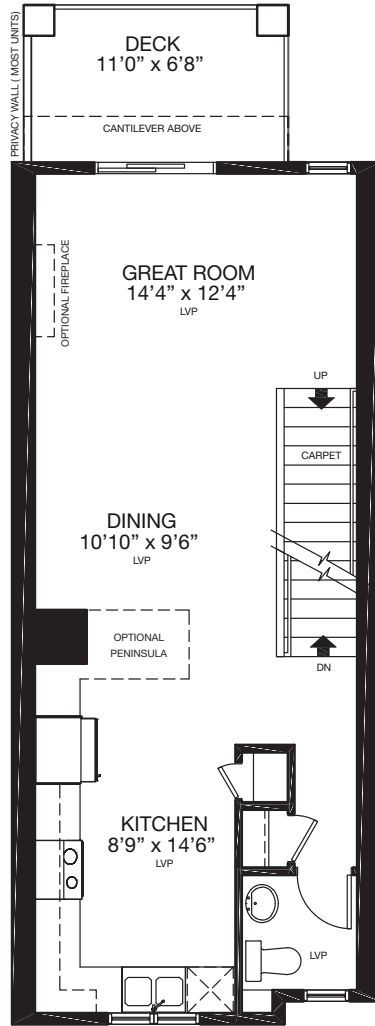
Trico Homes™

tricohomes.com

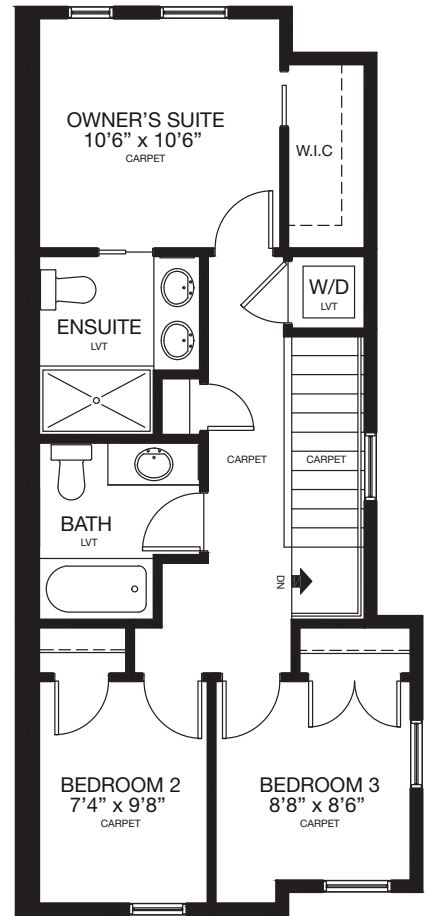
ENTRY
203 SQ.FT.



MAIN
559 SQ.FT.



UPPER
612 SQ.FT.



trichomes.com

Renderings are artist's conceptions only and may vary by community and lot selection. Prices, floorplans, specifications and dimensions are approximate and are subject to change without notice. E.&O.E. © All rights reserved, including the right if reproduction in the whole or in part without the permission of Trico Homes. TC-30744 Plan updated June 29, 2026.