

# THE REGENT

1,344 SQ.FT.

**Chelsea Court**  
TOWNHOMES

55, 285 Chelsea Court

3 Bedrooms ▲ 3½ Bathrooms ▲ Single Garage

## OPTIONS INCLUDED IN THIS HOME:

- Homesite located minutes away from local amenities, including eco-park, green spaces, schools, plaza & East Hills Shopping Centre
- Hardie Board siding exterior
- Entry level bedroom with full bathroom
- 9' Knock-down ceilings on entry & main level
- Open concept main floor
- Optional kitchen peninsula for additional seating
- Upgraded semi-built-in kitchen with stainless steel appliances & quartz countertops
- Zebra blinds
- 11' Wide deck with gas line on main level
- Dual bedrooms with separate ensuites
- 4-Piece owner's ensuite
- EV charging rough-ins in garage
- A/C rough-ins

## VISIT OUR SHOWHOMES

84 - 285 Chelsea Court  
Chestermere, AB



THE REGENT

Contact Marvin Ray Uy today

CALL: 852.605.0130 | EMAIL: marvinrayuy@tricohomes.com

## FALL POSSESSION



*Plus*  
RECEIVE YOUR OWN  
**TRICO RED CARD**



& ENJOY INCREDIBLE ONGOING SAVINGS & REWARDS FROM OUR PARTNERS & RETAILERS

### Showhome Hours:

MON - THURS: 2PM - 8PM

FRI: Closed

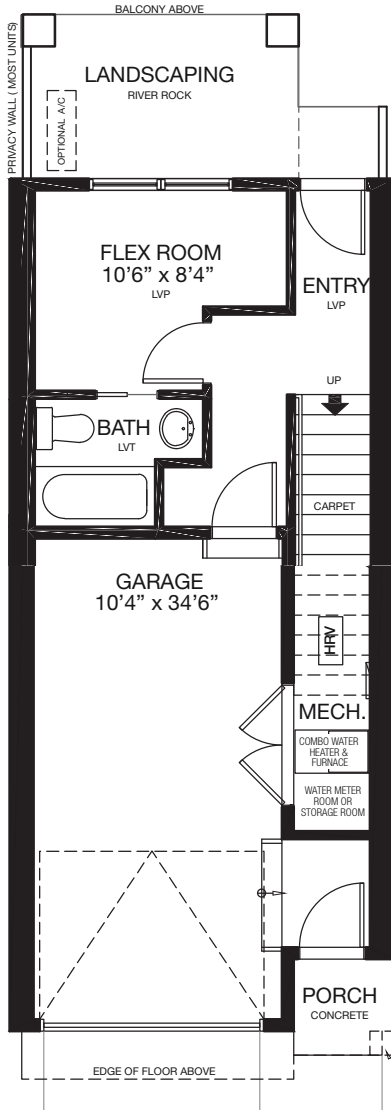
SAT - SUN: 12PM - 5PM



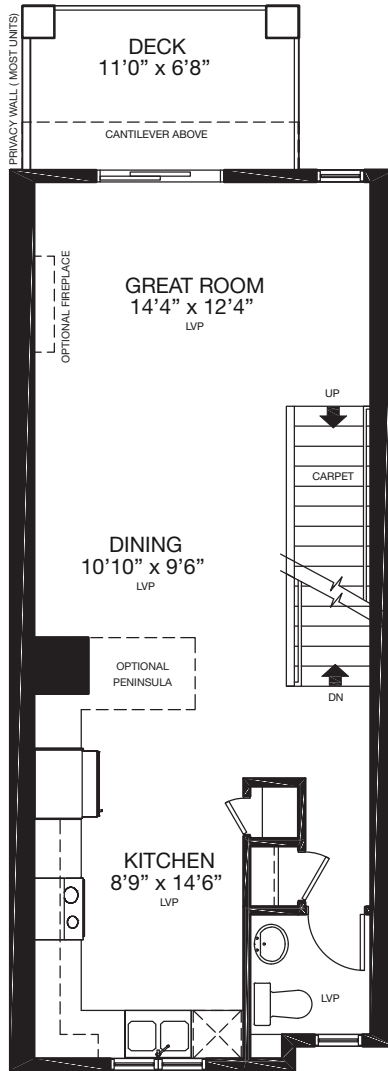
Trico Homes™

[tricohomes.com](http://tricohomes.com)

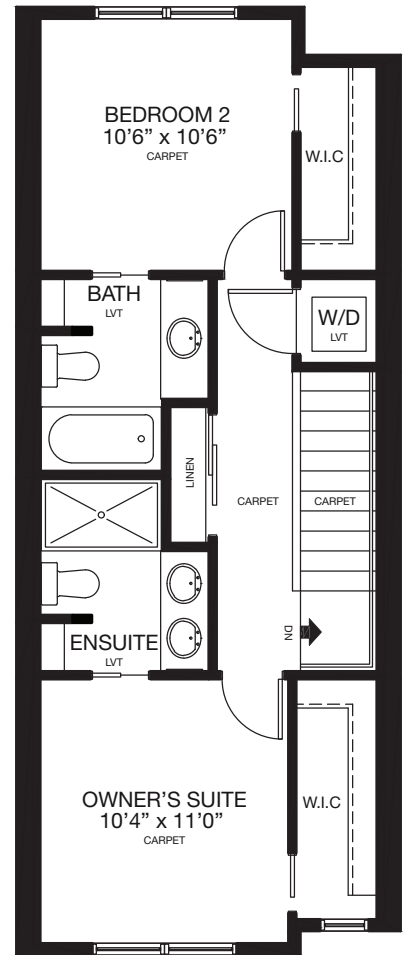
**ENTRY**  
203 SQ.FT.



**MAIN**  
559 SQ.FT.



**UPPER**  
582 SQ.FT.



tricohomes.com

Renderings are artist's conceptions only and may vary by community and lot selection. Prices, floorplans, specifications and dimensions are approximate and are subject to change without notice. E.&OE. © All rights reserved, including the right if reproduction in the whole or in part without the permission of Trico Homes. TC-30744 Plan updated June 23, 2026.